

Installation / Assembly Procedure and Parts Book



Orbit Reel™ Kits for All Models of Type 2 Reels

The Orbit Reel™ Kit installation instructions in this manual are generic, covering a wide variety of OEM equipment. A detailed parts list is available inside for each kit.

HCC, Inc.
1501 1st Avenue
Mendota, IL 61342
815-539-9371
www.hccincorporated.com

C-1096
September 2005

Safety

Most work related accidents are caused by failure to observe basic safety rules or precautions. An accident can often be avoided by recognizing potentially hazardous situations before an accident occurs. As you install the Orbit Reel™ Kit, you must be alert to potential hazards. You should also have the necessary training, skills, and tools to perform this installation properly.

Improper installation of this kit could cause the reel to function incorrectly, resulting in a dangerous situation that could result in injury or death.

Do not begin the installation of this kit until you read and understand the information contained in this supplement, as well as the OEM information provided by the manufacturer of the combine/header.



Safety precautions and warnings are provided in this manual and on the product. If these hazard warnings are not heeded, bodily injury or death could occur to you or to other persons.

HCC cannot anticipate every possible circumstance that might involve a potential hazard. The warnings in this supplement and on the product are, therefore, not all-inclusive. If an installation technique not specifically recommended by HCC is used, you must satisfy yourself that it is safe for you and for others. You should also ensure that the combine or header will not be damaged or be made unsafe by the installation method that you choose.

The information, specifications, and illustrations in this supplement are based on the information that was available at the time this material was written and can change at any time.

Safety Alert Symbols



The safety alert symbol means **Attention! Become Alert! Your Safety is Involved.**

Hazards are identified by the “Safety Alert Symbol” and followed by a signal word such as “DANGER”, “WARNING”, or “CAUTION”.

⚠ DANGER

DANGER: Indicates an imminently hazardous situation which, if not avoided, will result in death or serious injury. This signal word is limited to the most extreme situations.

⚠ WARNING

WARNING: Indicates a potentially hazardous situation which, if not avoided, could result in death or serious injury.

⚠ CAUTION

CAUTION: Indicates a potentially hazardous situation which, if not avoided, may result in minor or moderate injury. It may also be used to alert against unsafe practices.

IMPORTANT NOTICE

Indicates that equipment or property damage can result if instructions are not followed.

Safety Icon Nomenclature



Read the manual



Eye protection



Slipping injury



Tripping injury



Safety alert symbol

General Safety

WARNING



To avoid personal injury or death, carefully read and understand all instructions before attempting to install the Orbit Reel™ kit. Do not operate or work on a machine unless you read and understand the instructions and warnings in this and all other applicable manuals. Contact HCC if any of the instructions provided are unclear or not understood. Proper care is your responsibility. Always follow all State and Federal health and safety laws and/or local regulations.



To avoid eye injury, always wear protective glasses. Make sure no one can be injured by flying objects or debris when using tools or working on a machine.



Personal injury can result from slips or falls. **DO NOT** leave tools or parts laying around the work area, and clean up all spilled fluids immediately.

Contents

General Safety	3
Model Information	3
Installation Procedure	4
Parts Verification	4
Reel Removal	4
Track Support and Hardware Removal	5
Eccentric Track Support Assembly	7
Installing New Track Support Assembly	9
John Deere 900 Series Only	11
Installing the Reel	13
Attaching Reel Stop Brackets	14
6" Tine Spacing	15
4-1/2" Tine Spacing	16
Final Assembly	16
Basic Parts	17
Specific Kits	19

Model Information

Orbit Reel Kits	
Kit Part No.	Model
031287	John Deere 900, 25' and longer
031288	John Deere 900, 22' and shorter
032195	John Deere 600, 25' and longer
032196	John Deere 600, 22' and shorter
031306	Case IH 1010-1020, 22' and longer ¹
031307	Case IH 1010-1020, 20' and shorter
031302	Case IH 1010-1020, 22' and longer ²
031303	Case IH 1010-1020, 20' and shorter ²
031289	Case IH 1010-1020, 22' and longer ³
031290	Case IH 1010-1020, 20' and shorter ³
031297	Case IH 2010-2020, 22' and longer
031298	Case IH 2010-2020, 20' and shorter
031297	New Holland 72C and 74C, 22' and longer
031298	New Holland 72C and 74C, 20' and shorter
031299	New Holland 971/973, 25' and longer
031300	New Holland 971/973, 22' and shorter
031311	Honey Bee
031291	AGCO, 25' and longer
031292	AGCO, 20' and shorter
031310	MF

¹For headers with SN below 215,000 (1994 and prior).

²For headers with SN 315,001 and up only (1998 and later).

³For headers with SN 215,001-315,000 only (1995-1997).

NOTE: The Orbit Reel™ Kit works **only** with HCC tube type reels, which were original equipment on the above-listed headers since 1990.

Installation Procedure

Parts Verification

Open the shipping container for the Orbit Reel™ Kit and make sure all of the parts are contained in the box. Refer to the Parts Listing section in this manual for a complete listing of all parts in each kit. If all the parts are not in the box, contact HCC, Inc.

Reel Removal

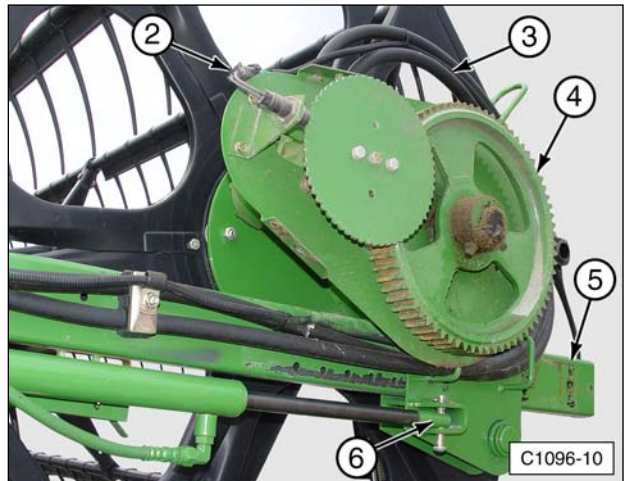
There are two types of Orbit Reel™ kits: single eccentric and double eccentric. On a single eccentric reel, only the end shield on the drive end will require removal of the existing end shield and installation of the eccentric end shield. On a double eccentric reel, both ends of the reel will require removal of the existing end shield and installation of two eccentric end shields.

⚠ DANGER

Before starting the removal procedure, make sure the reel is adequately supported using an overhead lifting device or a material handling device (forklift). Follow all OEM safety recommendations when removing the reel. Reels can weigh between 500 and 1000 lbs. and will result in serious injury or death if not adequately supported during removal.

1. Remove the reel from the header using OEM instructions. This may include removing divider points (1), disconnecting hydraulic hoses (3), removing electrical connections such as reel speed sensors (2), removing linkages from cylinder rod connections (6), and/or removing stop plates (5).

NOTE: Mark the location of each hydraulic hose before removing. This will ensure the proper rotation of the reel when the hoses are reinstalled.



- (1) Divider Points. (2) Reel Speed Sensor. (3) Hydraulic Hoses. (4) Drive Gear or Pulley. (5) Stop Plate. (6) Cylinder Rod Connections.

IMPORTANT NOTICE

Plug or cap the hydraulic connections of the hoses and/or motor to prevent contamination of the hydraulic system.



2. Securely attach a lifting device to the reel.
3. Remove the reel from the header reel arms.
4. Place the reel on support stands capable of holding at least 1000 lbs. each.

⚠ DANGER

Inadequate support stands could collapse, causing serious injury or death.

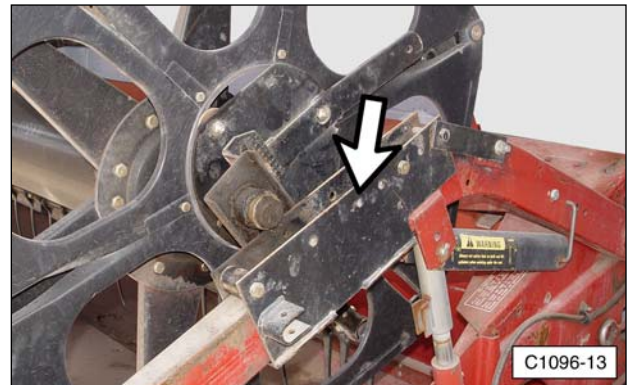
Track Support and Hardware Removal

1. Remove the pitch adjustment bolt and nut that fastens the reel attaching bracket to the end shield.



NOTE: The pictures show a typical reel and may not reflect the actual reel being worked on.

2. Remove the reel attaching bracket from the end shaft.



NOTE: On John Deere 900 series headers, the end shield with drive motor can be removed as a unit after completing Step 3.



- Using an 8 mm Allen wrench and a 19 mm socket and ratchet, remove all six shoulder bolts and nuts that fasten the end shield to the tine tube bracket(s). This hardware will not be reused.



Tools: 8 mm Allen wrench
19 mm socket and ratchet



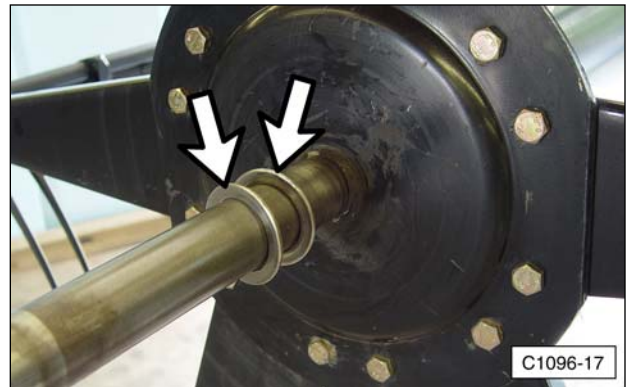
- On double eccentric reels, remove the other reel attaching bracket and end shield.

CAUTION

The end shield and bracket assembly are heavy and can cause bodily injury, if not removed properly. Use an overhead lifting device or two people to remove end shield.



NOTE: When removing the end shield from the drive end of the reel, be careful not to lose the end shaft thrust washer(s). These must be installed with the new eccentric track support for proper operation of the reel.



- Some components of the drive-end may be reused with the new Orbit Reel™ bracket. Make sure to note the location and position of all components before removing them.



Eccentric Track Support Assembly

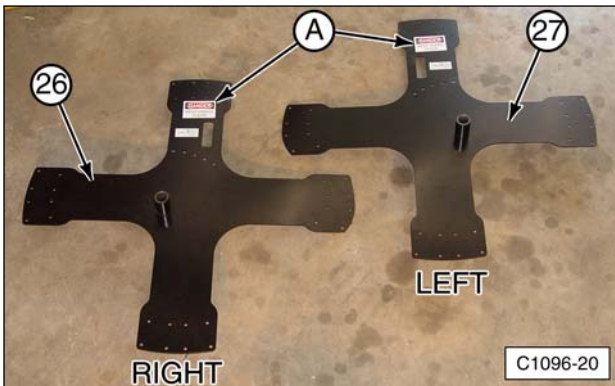
Assemble the new track support(s) with the roller tracks.

1. Remove the track support from the shipping container.



2. Select either a right-hand (26) or left-hand (27) track support.

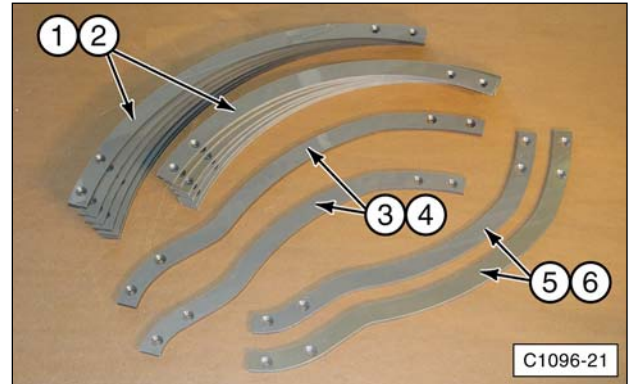
NOTE: Double eccentric kits have right and left-hand track supports. The right and left-hand track supports are shown in the photo.



3. Place the track support on a stand or bench with the decals (A) facing down.

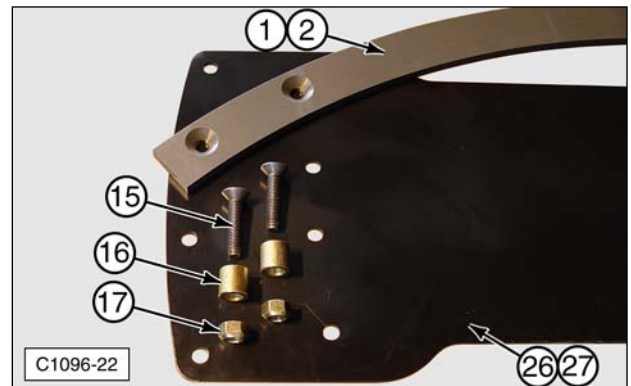
4. Remove the three sets of semi-circular inner and outer roller tracks (1 and 2) from the shipping container. Also, remove the action-section inner and outer roller tracks (3, 4, 5, 6).

NOTE: Single eccentric models only contain right-hand parts.



(1,2) Semi-Circular Roller Track. (3) Inner RH Action-Section Roller Track. (4) RH Outer Action-Section Roller Track. (5) LH Inner Action-Section Roller Track. (6) LH Outer Action-Section Roller Track.

5. Place the three sets of the inner and outer semi-circular roller tracks (1 and 2) on track support (26, 27). Make sure countersink holes in the roller tracks are facing upward.
6. Remove 32 flathead socket cap screws (15), 32 spacers (16), and 32 locknuts (17) from the small parts bag. Double eccentric kits have 64 of each item.

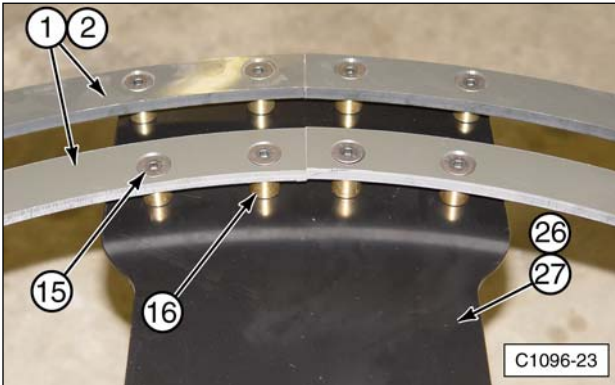


(1,2) Semi-Circular Roller Track. (15) Flathead Socket Cap Screws. (16) Spacers. (17) Locknuts. (26,27) Track Support.

7. Assemble the roller tracks to the track support using flathead socket cap screws (15), spacers (16), and locknuts (17). The tracks are designed so they can only be installed in the correct location. If the bolt holes do not align, reposition the roller track until the holes align. Loosely tighten the locknuts.



Tools: 6 mm Allen wrench
17 mm socket and ratchet

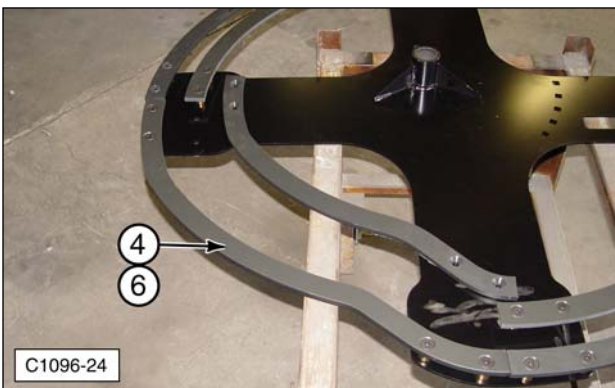


(1,2) Semi-Circular Roller Track. (15) Flathead Socket Cap Screws. (16) Spacers. (26,27) Track Support.

8. Install the outer action-section roller track (4 or 6) to the track support using flathead socket cap screws (15), spacers (16), and locknuts (17).

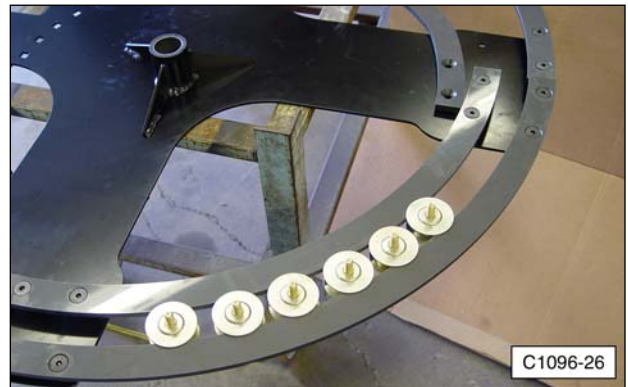
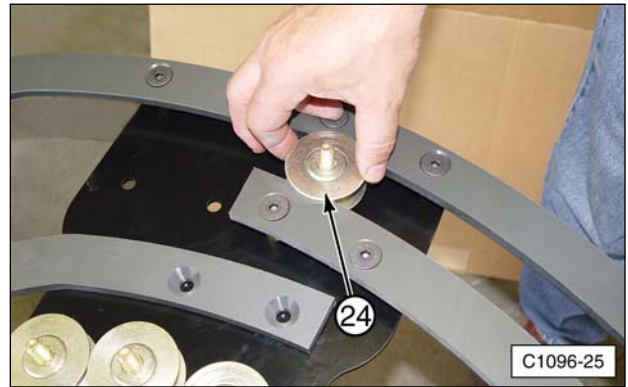


Tools: 6 mm Allen wrench
17 mm socket and ratchet



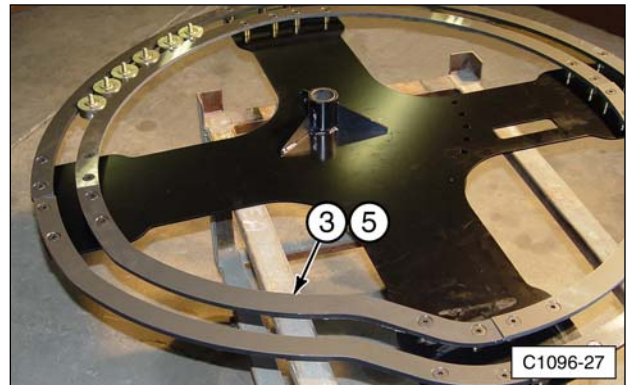
(4,6) Left or Right-Hand Outer Action-Section.

9. Install six ball bearing rollers (24) into the roller track, as shown.



(24) Ball Bearing Roller.

10. Install the remaining inner action-section roller track (3 or 5) onto the track support.



(3,5) Left or Right-Hand Inner Action-Section.

11. Completely tighten all locknuts (17) holding the roller track (1, 2, 3, 4, 5, 6) to track support (26, 27).



Tools: 6 mm Allen wrench
17 mm socket and ratchet

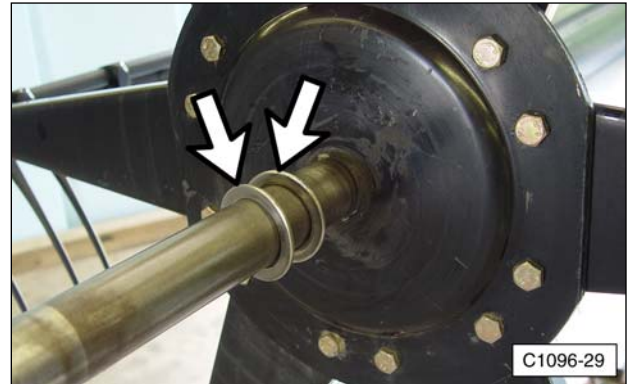
IMPORTANT NOTICE

Do not overtighten locknuts (17). Overtightening may cause the roller tracks to deform.

12. Make sure rollers (24) slide easily through the roller track. If rollers do not slide easily through roller track, make sure the locknuts on the flathead socket cap screws are not overtightened.
13. On double eccentric kits, assemble the roller tracks and install the rollers onto the other track support in the same way.

Installing New Track Support Assembly

1. Make sure original thrust washer(s) on the end shaft are reinstalled.



2. Install the drive end track support onto the end shaft.

NOTE: On double eccentric reels, make sure the right and left-hand track support assemblies are installed onto the proper ends of the reel.



- Attach rollers (24) on the tine tube crank arms using locknuts (25). The locknuts must be completely tight, but do not overtighten.



Tools: 8 mm Allen Wrench
17 mm socket and ratchet



(24) Ball Bearing Roller. (25) Locknut.

- Attach the remaining five rollers onto the tine tube crank arms.



NOTE: On double eccentric reels, attach the rollers to the tine tube crank arms in the same way on the other end of the reel.

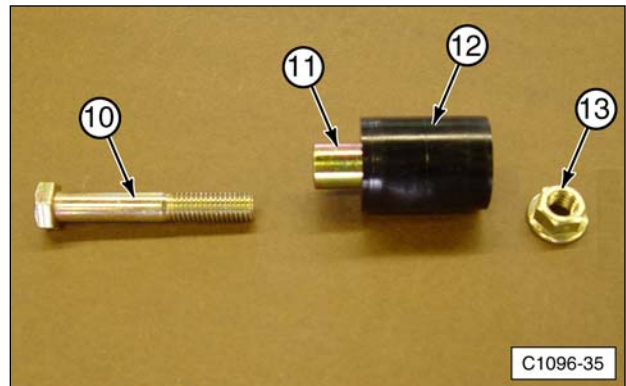
- Remove the reel attaching bracket(s) (28, 29) from the shipping container. If the kit contains two brackets, identify the right and left-hand ends. (Refer to the Parts section of this manual for specific parts.)



Typical Reel Attaching Brackets.

NOTE: The brackets are shown as they would be installed looking at the front of the reel.

- Remove the reel support roller hardware, which includes bolt (10), roller bearing (11), plastic roller (12), and flanged locknut (13), from the shipping container.



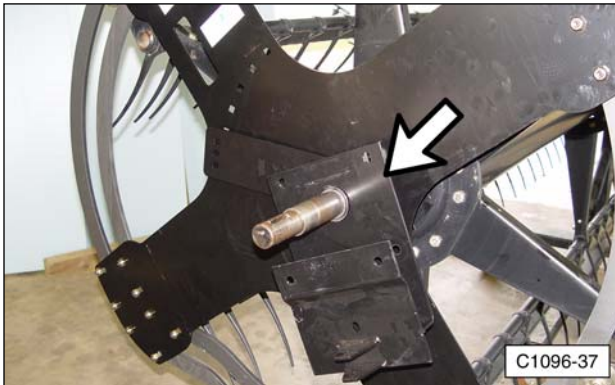
(10) Bolt. (11) Roller Bearing. (12) Roller. (13) Flanged Locknut.

7. Assemble the rollers into the reel attaching bracket(s). For assembly of John Deere 900 series kits, proceed to Step 8. For all other models, go to Step 9.

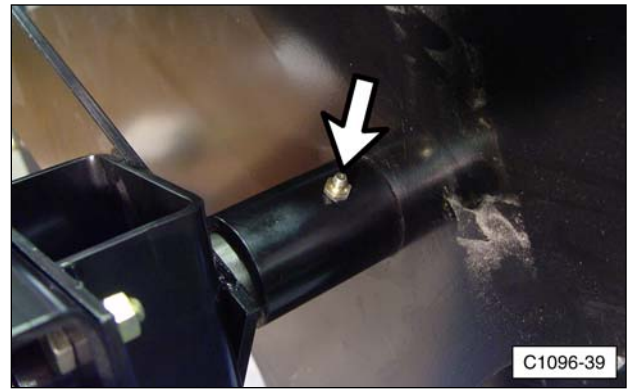
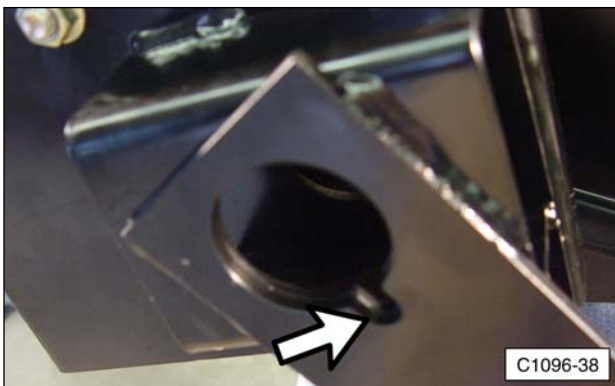


John Deere 900 Series Only.

- 8a. Install reel attaching bracket(s) onto end shaft.



NOTE: When installing the reel attaching bracket(s), rotate the bracket until the clearance slot in the bracket slides over the grease zerk.



IMPORTANT NOTICE

Failure to follow this step can cause damage to the grease zerk and/or end shaft.

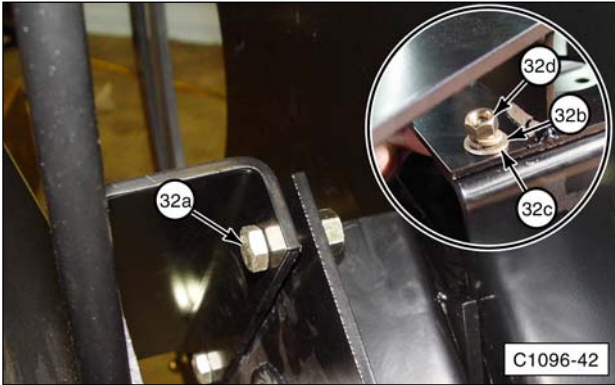
- 8b. On the drive end, slide the drive motor mounting bracket onto the end shaft.



8c. Align the mounting holes and assemble the two brackets using two bolts (32a), washers (32c), lockwashers (32b), and locknuts (32d). Loosely tighten the locknuts.

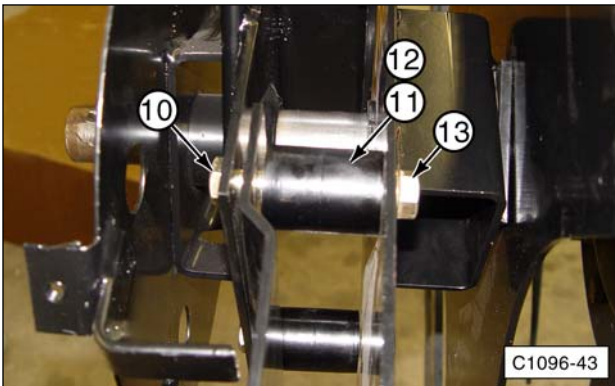


Tools: Two 3/4 inch wrenches



(32a) Bolt. (32b) Lockwasher. (32c) Flat Washer.
(32d) Locknut

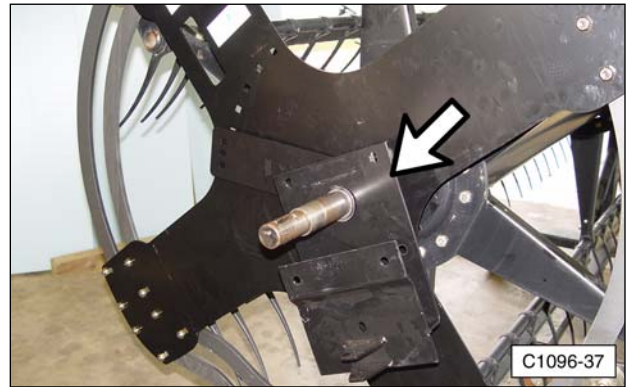
8d. Install two rollers (12) and roller bearings (11) using 1/2-13 x 3.25 inch long bolts (10) and flanged locknuts (13).



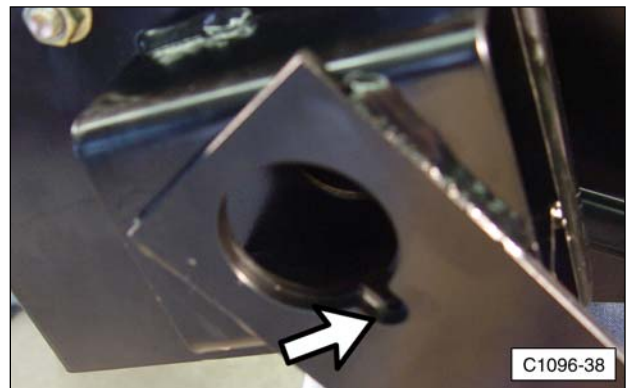
(10) Bolts. (11) Roller Bearings. (12) Rollers.
(13) Flanged Locknuts.

8e. Tighten all four nuts completely.

9. Install reel attaching bracket(s) onto end shaft.

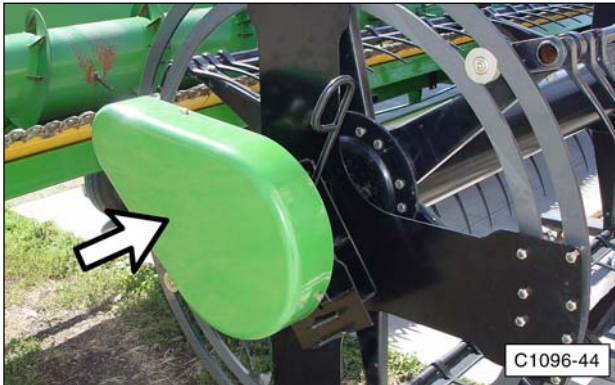


NOTE: When installing the reel attaching bracket(s), rotate the bracket until the clearance slot in the bracket slides over the grease zerk.

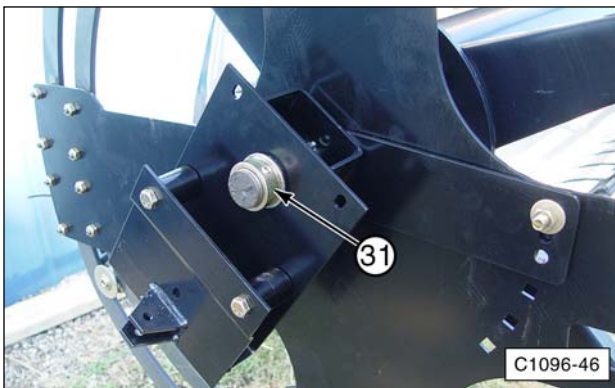


IMPORTANT NOTICE
Failure to follow this step can cause damage to the grease zerk and/or end shaft.

10. Reassemble the drive end components removed from original end shield. Tighten the drive gear or sprocket onto the shaft. Reinstall hydraulic motor and drive gear guards.



11. On double eccentric kits, install a locking with two set screws (31) on the non-drive-end of the reel.



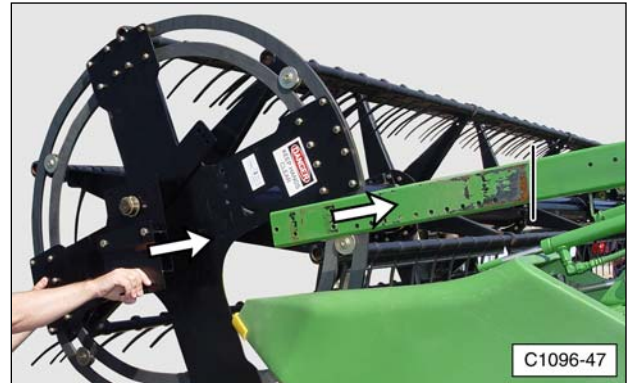
(31) Lockring with set screws.

Installing the Reel

⚠ DANGER

The reel assembly is heavy. Follow all OEM safety recommendations when installing the reel. Reels can weigh between 500 and 1000 lbs. and will result in serious injury or death if not adequately supported during installation.

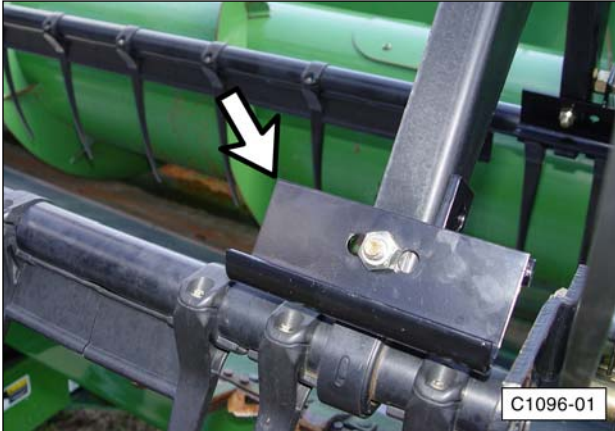
1. Lift the reel off the support stands and install it onto the header reel lift arms.



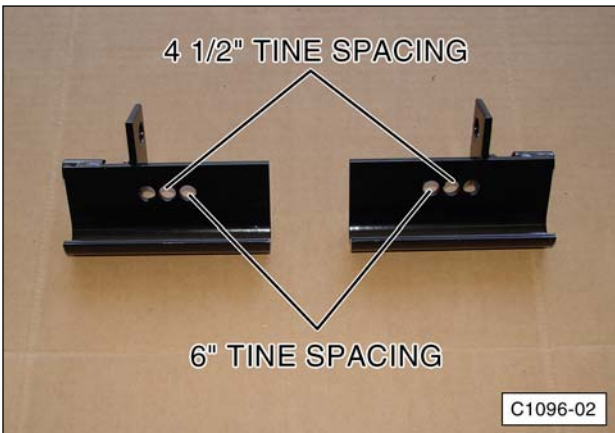
2. Reattach hydraulic hoses in the proper location. Reattach any cylinder rods. Install stop plates and any other reel components that were previously removed.

Attaching Reel Stop Brackets

The installation of the Reverse Stop Brackets for the Orbit Reel™ Kit will keep the tines rotating into the crop in the proper orientation. Without the installation of the reverse stop brackets the tine tubes can rotate, placing the tines in a position that may affect their ability to move the crop into the header.



There are left and right-hand reverse stop brackets. The photo shows the orientation of the brackets as they would be installed when facing the reel. The proper mounting holes used to install the brackets are shown below.



The installed location of the reverse stop bracket depends on the spacing of the tines. Follow Steps 1 through 5 to install the brackets. If the tines are spaced at 6 inch intervals, use Steps 3a through 3c. If the tines are spaced at 4-1/2 inch intervals, use Steps 3d through 3f. Tine spacing is the measurement between one tine and the next.

1. Make sure the tine tube is correctly oriented, as shown in the photos.

NOTE: To adjust the rotation of the tine tube roller bracket, rotate the reel to the front of the header (closest to you) until the tine tube bracket and the reel arm are parallel. In this position, the tine tube can be rotated into the correct orientation.



Correct orientation (roller is below or leading tine tube into header).



Incorrect orientation (roller is above or following tine tube into header).

⚠ WARNING



A pinch point exists between the roller and the roller track when rotating the reel. To avoid personal injury, do not place your fingers between the inner and outer roller tracks.

2. Remove the locknut and bolt holding the tine tube bearing onto the reel arm. Discard the locknut and bolt.



Tools: 17 mm socket and ratchet
17 mm wrench

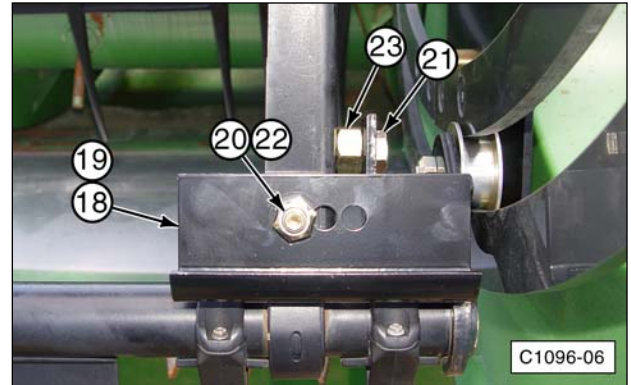


3. Install the reverse stop brackets. If the tine spacing is 6 inches, follow Steps 3a through 3c. If the tine spacing is 4-1/2 inches, follow Steps 3d through 3f.



Tools: 17 mm socket and ratchet
17 mm wrench

6 Inch Tine Spacing



Installation for 6 inch tine spacing.

(18) RH Reverse Stop Bracket. (19) LH Reverse Stop Bracket. (20) Long Bolt. (21) Short Bolt. (22) Locknut. (23) Hex Spacer.

- 3a. Place the correct (reverse stop) bracket (18 or 19, left or right) on top of the bearing and install an M10 x 60 mm long bolt (20) through the bearing, bearing clamp, and bracket. The bolt must be installed in the inner most hole, as shown. Install and loosely tighten M10 locknut (22).

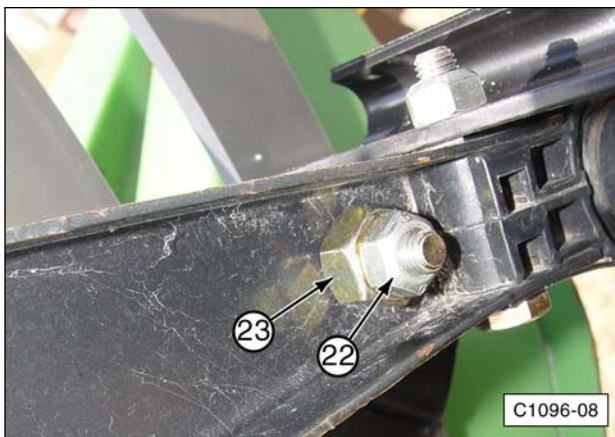
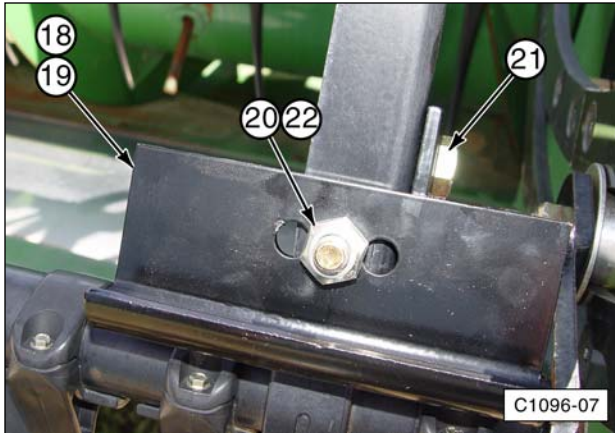
NOTE: Make sure the bolt head is positioned on the bottom of the reel arm.

- 3b. Install an M10 x 35 mm long bolt (21), hex spacer (23), and locknut (22) through the side hole in bracket (18 or 19). The hex spacer must be positioned between the bracket and the reel arm, as shown.

NOTE: The hex spacer (23) is a heavy-duty nut.

- 3c. Completely tighten both locknuts. Overtightening the locknuts can cause damage to the tine tube bearing.

4-1/2 Inch Tine Spacing



Installation for 4-1/2 inch tine spacing.
 (18) RH Reverse Stop Bracket. (19) LH Reverse Stop Bracket. (20) Long Bolt. (21) Short Bolt. (22) Locknut. (23) Hex Spacer.

- 3d.** Place the correct (reverse stop) bracket (18 or 19, left or right) on top of the bearing and install an M10 x 60 mm long bolt (20) through the bearing, bearing clamp, and bracket. The bolt must be installed in the center hole, as shown. Install and loosely tighten M10 locknut (22).

NOTE: Make sure the bolt head is positioned on the bottom of the reel arm.

- 3e.** Install an M10 x 35 mm long bolt (21), hex spacer (23), and locknut (22) through the side hole in bracket. The hex spacer must be positioned between the reel arm and the locknut, as shown.

NOTE: The hex spacer (23) is a heavy-duty nut.

- 3f.** Completely tighten both locknuts. Overtightening the locknuts can cause damage to the tine tube bearing.

- 4.** Rotate the next tine tube to the front position, correctly position the tine tube, and continue to install the remaining reverse stop brackets; six on single eccentric reels and twelve on double eccentric reels.
- 5.** Rotate the reel assembly until the center hole in track support (26 or 27) aligns with the center hole in end shaft bracket (28 or 29), as shown.
- 6.** Install bolt (7), belleville washer (8), and nut (9).

NOTE: Make sure the taper of the washer is facing outward and the nut is installed on the outboard side of the reel assembly, as shown.



(7) Bolt. (8) belleville Washer. (9) Nut. (26,27) Track Support. (28,29) End Shaft Bracket.

Final Assembly

1. Install the divider points, if necessary.
2. Set the pitch adjustment [end plate bracket (28 or 29)] to suit crop conditions.
3. Grease both ends of the reel shaft.
4. Adjust the cutter-bar-to-tine distance as per manufacturer's recommendation.

IMPORTANT NOTICE

Failure to make proper adjustments could result in cutting off the tips of the plastic tine fingers.

Basic Parts

All quantities shown in the Common Parts Chart are for a single eccentric reel. Double eccentric reels have twice the quantity.

The following parts are common to all Orbit Reel™ Kits. For the part numbers contained in a kit for a specific model, refer to the Kit section that follows.

Common Parts			
Eccentric Roller Tracks			
1	483238	Outer Semi-Circular Section (Roller Track)	3
2	483239	Inner Semi-Circular Section (Roller Track)	3
3	483261	RH Inner Action-Section ¹ (Roller Track)	1
4	483241	RH Outer Action-Section ¹ (Roller Track)	1
5	483273	LH Inner Action-Section ¹ (Roller Track)	1
6	483274	LH Outer Action-Section ¹ (Roller Track)	1
Pitch Adjustment Hardware			
7	201145	Carriage Bolt (M12 X 1.75 X 40)	1
8	214244	Belleville Washer (M12)	1
9	212404	Hex Nut (M12 X 1.75)	1
Hardware Kit			
14	793982 ²	Double Eccentric or	1
	783992 ²	Single Eccentric LH or	
	783993 ²	Single Eccentric RH	

¹ Single eccentric kits only have a right or left-hand part.

² See Hardware Kits chart for list of parts contained in the hardware package.

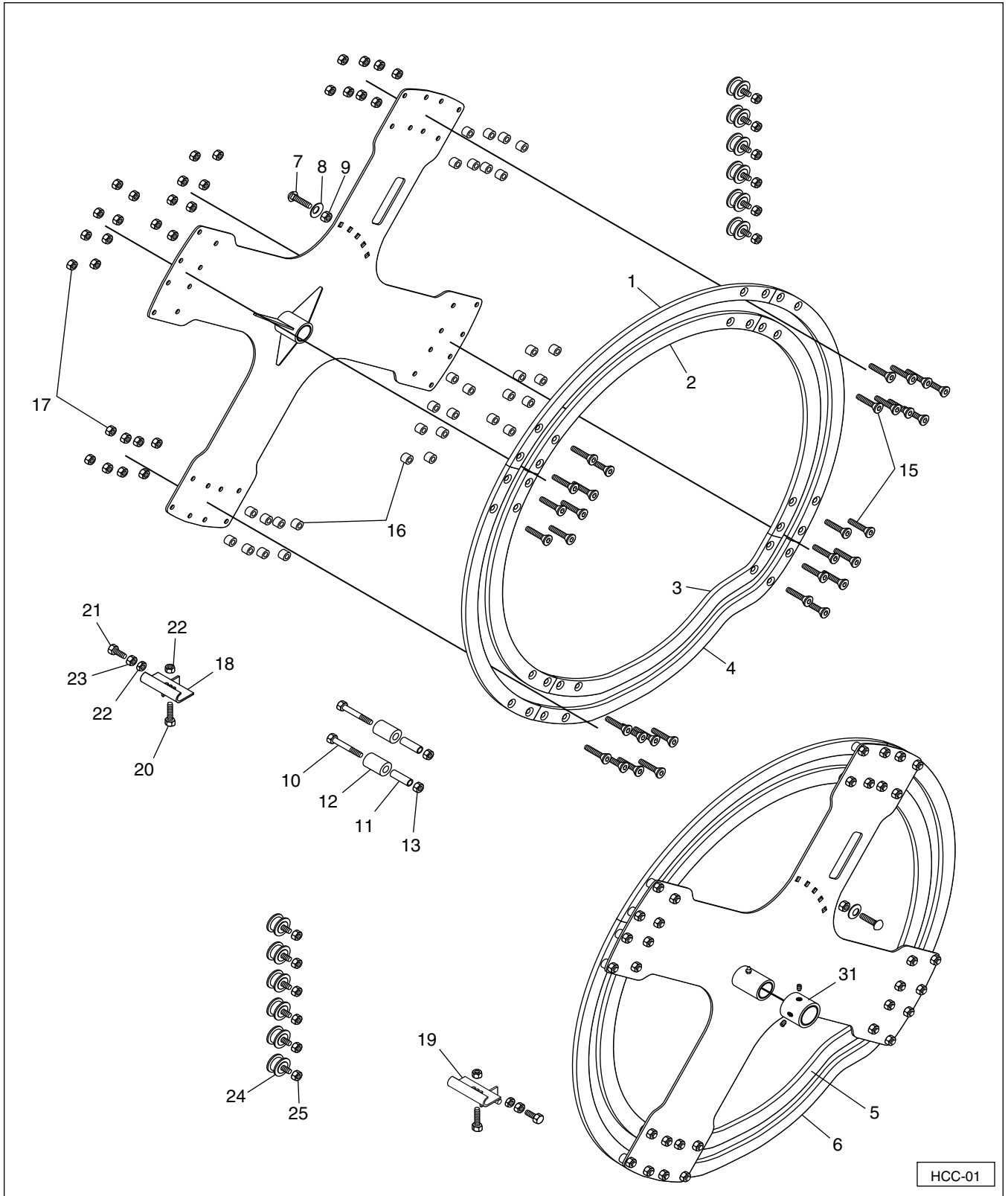
One of the following three hardware kits, containing bolts, washers, nuts, etc., is packaged with each kit.

Hardware Kits			
793982 Double Eccentric, 783992 Single Eccentric LH, and 783993 Single Eccentric RH Hardware Kits			
Eccentric Roller Track Mounting Hardware			
15	206071	Flat Head Socket Cap Screw (M10 X 45)	32
16	483275	Spacer	32
17	212412	Lock Nut (M10)	32
Reverse Stop Bracket Hardware			
18	783985	RH Reverse Stop Bracket ^{1,2}	6
19	783986	LH Reverse Stop Bracket ^{1,3}	6
20	202813	Bolt (M10 X 60)	6
21	202809	Bolt (M10 X 35)	6
22	212412	Locknut (M10)	12
23	212301	Hex Spacer	6
Eccentric Roller Hardware			
24	243719	Ball Bearing Roller	6
25	212412	Lock Nut (M10)	6

¹ Double eccentric kits have both a right and left-hand part.

² Part of 783993 Single Eccentric RH kit.

³ Part of 783992 Single Eccentric LH kit.



Specific Kits

031287 Kit—Double Orbit Reel Package (John Deere 900 Series)

Kit contains parts 1 through 25, in addition to parts listed in this chart.

26	783983	RH Orbit (Track) Support Assy	1
27	783984	LH Orbit (Track) Support Assy	1
28	783980	RH End Bracket	1
29	783981	LH End Bracket	1
30	782035	Motor Support Bracket	1

14	783982	Reel Assembly Parts Bag	1
----	--------	-------------------------	---

Roller Mounting Hardware

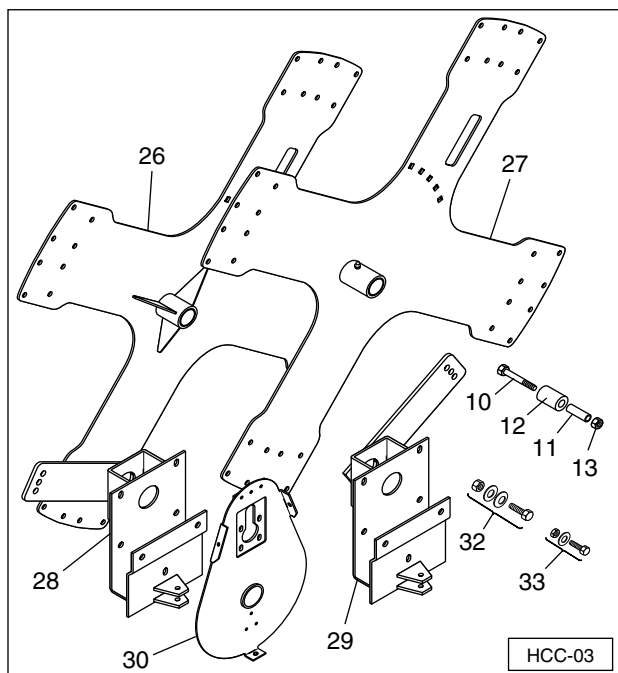
10	202075	Hex Head Bolt (1/2-13 X 3.25")	4
11	481497	Tubing Spacer [Roller Bearing (.75" X 2.06")]	4
12	243686	Reel Support Roller	4
13	212196	Prevailing Torque Hex Flange Lock Nut (1/2-13)	4

Bracket Mounting Hardware

32a	202190	Hex Head Bolt (3/8-16 X 1.0")	2
b	214130	Helical Spring Lock Washer (3/8")	2
c	214270	Flat Washer (3/8")	2
d	212150	Hex Nut (3/8-16)	2

Hydraulic Motor Mounting Hardware

33	202600	Hex Head Bolt (5/16-18 X .50")	3
	214120	Helical Spring Lock Washer (5/16")	3
	214360	Flat Washer (5/16")	3



031288 Kit—Single Orbit Reel Package (John Deere 900 Series)

Kit contains parts 1 through 25, in addition to parts listed in this chart.

26	783983	RH Orbit (Track) Support Assy	1
28	783981	RH End Bracket	1
30	782035	Motor Support Bracket	1

14	783993	Reel Assembly Parts Bag	1
----	--------	-------------------------	---

Roller Mounting Hardware

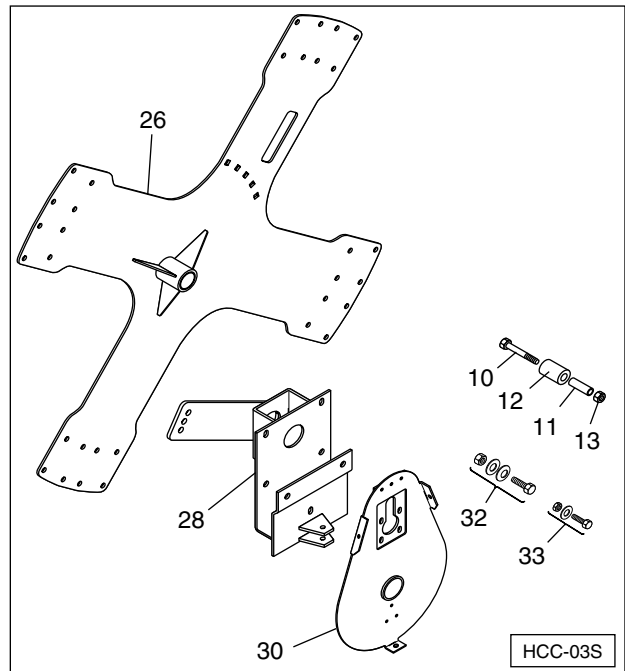
10	202075	Hex Head Bolt (1/2-13 X 3.25")	2
11	481497	Tubing Spacer [Roller Bearing (.75" X 2.06")]	2
12	243686	Reel Support Roller	2
13	212196	Prevailing Torque Hex Flange Lock Nut (1/2-13)	2

Bracket Mounting Hardware

32a	202190	Hex Head Bolt (3/8-16 X 1.0")	2
b	214130	Helical Spring Lock Washer (3/8")	2
c	214270	Flat Washer (3/8")	2
d	212150	Hex Nut (3/8-16)	2

Hydraulic Motor Mounting Hardware

33	202600	Hex Head Bolt (5/16-18 X .50")	3
	214120	Helical Spring Lock Washer (5/16")	3
	214360	Flat Washer (5/16")	3



**031295 Kit—Double Orbit Reel Package
(John Deere 600 Series)**

Kit contains parts 1 through 25, in addition to parts listed in this chart.

26	784013	RH Orbit (Track) Support Assy	1
27	784014	LH Orbit (Track) Support Assy	1
28	784010	RH End Bracket	1
29	784009	LH End Bracket	1

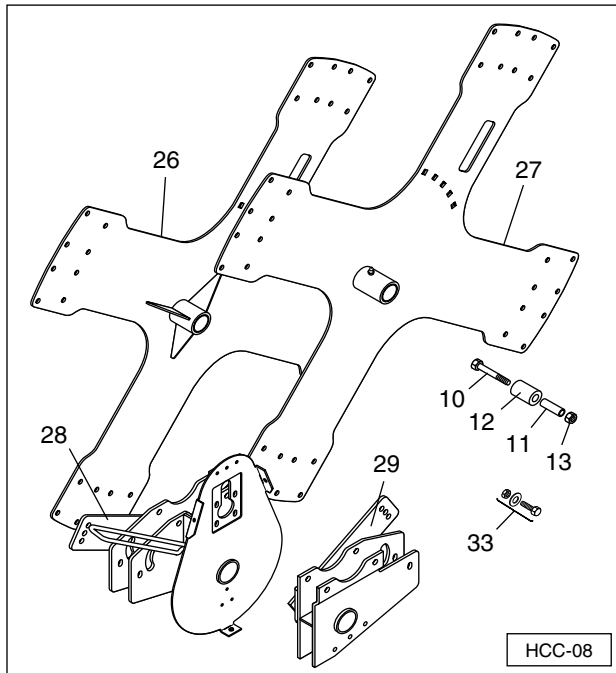
14	783982	Reel Assembly Parts Bag	1
----	--------	-------------------------	---

Roller Mounting Hardware

10	202075	Hex Head Bolt (1/2-13 X 3.25")	4
11	481497	Tubing Spacer (.75" X 2.06")	4
12	243686	Reel Support Roller	4
13	212196	Prevailing Torque Hex Flange Lock Nut (1/2-13)	4

Hydraulic Motor Mounting Hardware

33	202600	Hex Head Bolt (5/16-18 X .50")	3
	214120	Helical Spring Lock Washer (5/16")	3
	214360	Flat Washer (5/16")	3



**031296 Kit—Single Orbit Reel Package
(John Deere 600 Series)**

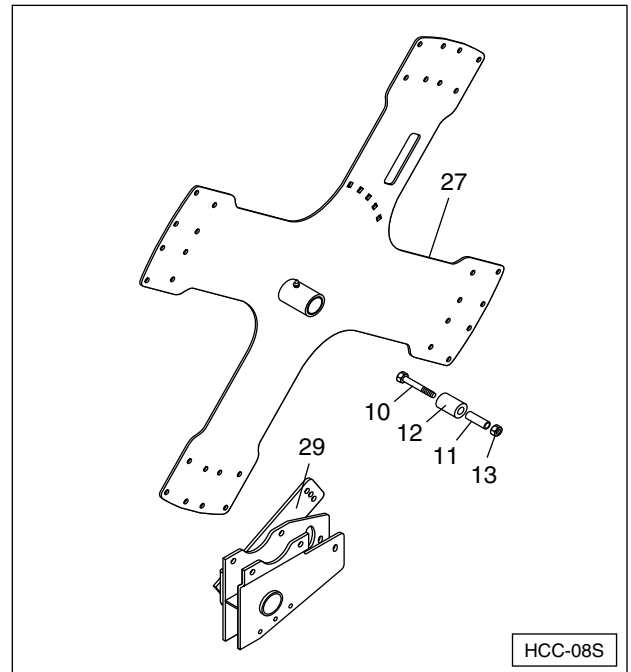
Kit contains parts 1 through 25, in addition to parts listed in this chart.

27	784014	LH Orbit (Track) Support Assy	1
29	784009	LH End Bracket	1

14	783992	Reel Assembly Parts Bag	1
----	--------	-------------------------	---

Roller Mounting Hardware

10	202075	Hex Head Bolt (1/2-13 X 3.25")	2
11	481497	Tubing Spacer (.75" X 2.06")	2
12	243686	Reel Support Roller	2
13	212196	Prevailing Torque Hex Flange Lock Nut (1/2-13)	2



**031306 Kit—Double Orbit Reel Package
(Case 1010/1020)**

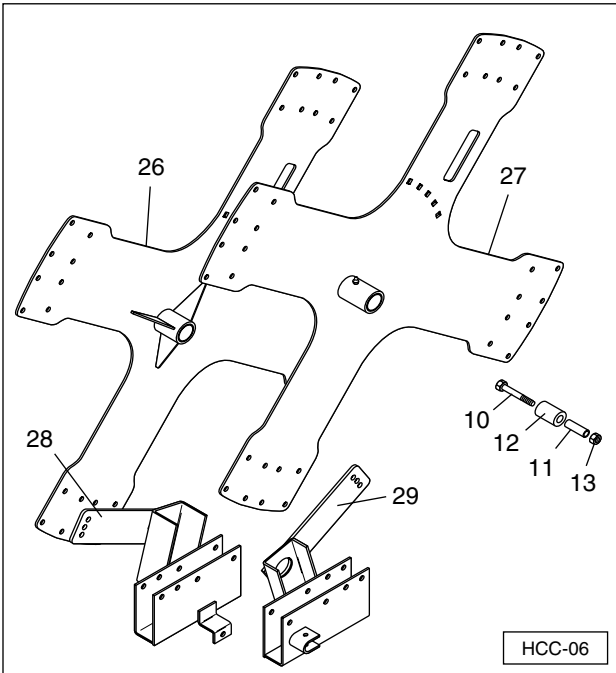
Kit contains parts 1 through 25, in addition to parts listed in this chart.

26	783991	RH Orbit (Track) Support Assy	1
27	783984	LH Orbit (Track) Support Assy	1
28	784025	RH End Bracket	1
29	784024	LH End Bracket	1

14	783982	Reel Assembly Parts Bag	1
----	--------	-------------------------	---

Roller Mounting Hardware

10	202826	Hex Head Bolt (M12 X 1.75 X 80)	4
11	481497	Tubing Spacer (.75" X 2.06")	4
12	243686	Reel Support Roller	4
13	212413	Prevailing Torque Hex Flange Lock Nut (M12 X 1.75)	4



**031307 Kit—Single Orbit Reel Package
(Case 1010/1020)**

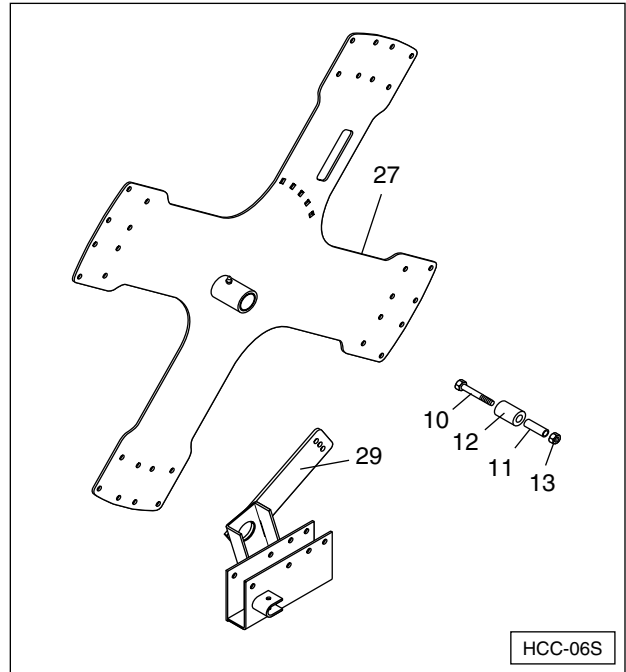
Kit contains parts 1 through 25, in addition to parts listed in this chart.

27	783984	LH Orbit (Track) Support Assy	1
29	784024	LH End Bracket	1

14	783992	Reel Assembly Parts Bag	1
----	--------	-------------------------	---

Roller Mounting Hardware

10	202826	Hex Head Bolt (M12 X 1.75 X 80)	2
11	481497	Tubing Spacer (.75" X 2.06")	2
12	243686	Reel Support Roller	2
13	212413	Prevailing Torque Hex Flange Lock Nut (M12 X 1.75)	2



**031302 Kit—Double Orbit Reel Package
(Case 1010/1020)**

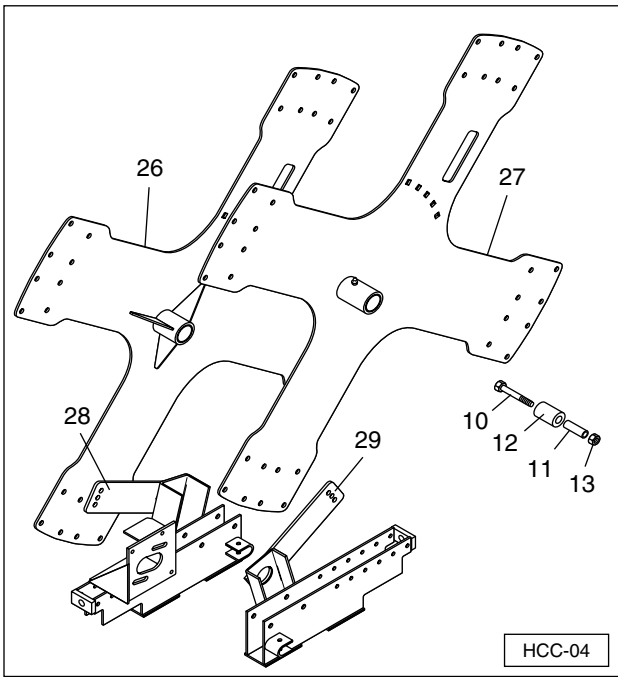
Kit contains parts 1 through 25, in addition to parts listed in this chart.

26	783991	RH Orbit (Track) Support Assy	1
27	783984	LH Orbit (Track) Support Assy	1
28	784016	RH End Bracket	1
29	784015	LH End Bracket	1

14	783982	Reel Assembly Parts Bag	1
----	--------	-------------------------	---

Roller Mounting Hardware

10	202826	Hex Head Bolt (M12 X 1.75 X 80)	4
11	481497	Tubing Spacer (.75" X 2.06")	4
12	243686	Reel Support Roller	4
13	212413	Prevailing Torque Hex Flange Lock Nut (M12 X 1.75)	4



**031303 Kit—Single Orbit Reel Package
(Case 1010/1020)**

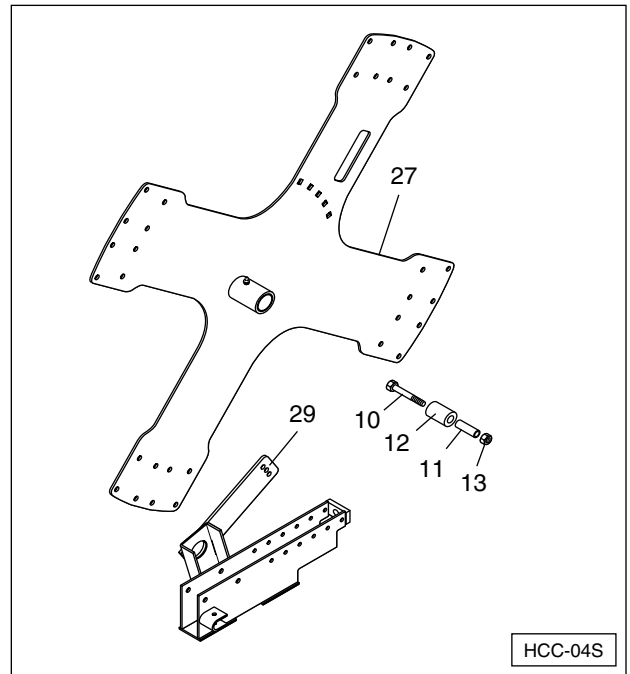
Kit contains parts 1 through 25, in addition to parts listed in this chart.

27	783984	LH Orbit (Track) Support Assy	1
29	784015	LH End Bracket	1

14	783992	Reel Assembly Parts Bag	1
----	--------	-------------------------	---

Roller Mounting Hardware

10	202826	Hex Head Bolt (M12 X 1.75 X 80)	2
11	481497	Tubing Spacer (.75" X 2.06")	2
12	243686	Reel Support Roller	2
13	212413	Prevailing Torque Hex Flange Lock Nut (M12 X 1.75)	2



**031289 Kit—Double Orbit Reel Package
(Case 1010/1020)**

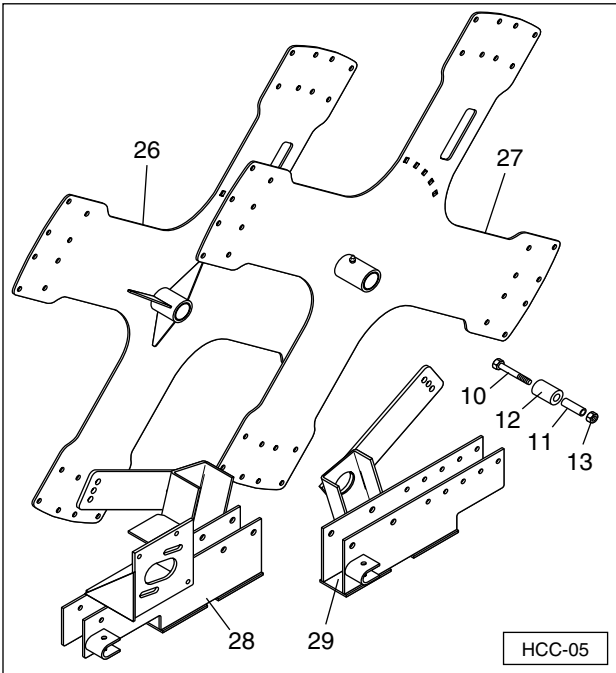
Kit contains parts 1 through 25, in addition to parts listed in this chart.

26	783991	RH Orbit (Track) Support Assy	1
27	783984	LH Orbit (Track) Support Assy	1
28	783989	RH End Bracket	1
29	783990	LH End Bracket	1

14	783982	Reel Assembly Parts Bag	1
----	--------	-------------------------	---

Roller Mounting Hardware

10	202826	Hex Head Bolt (M12 X 1.75 X 80)	4
11	481497	Tubing Spacer (.75" X 2.06")	4
12	243686	Reel Support Roller	4
13	212413	Prevailing Torque Hex Flange Lock Nut (M12 X 1.75)	4



**031290 Kit—Single Orbit Reel Package
(Case 1010/1020)**

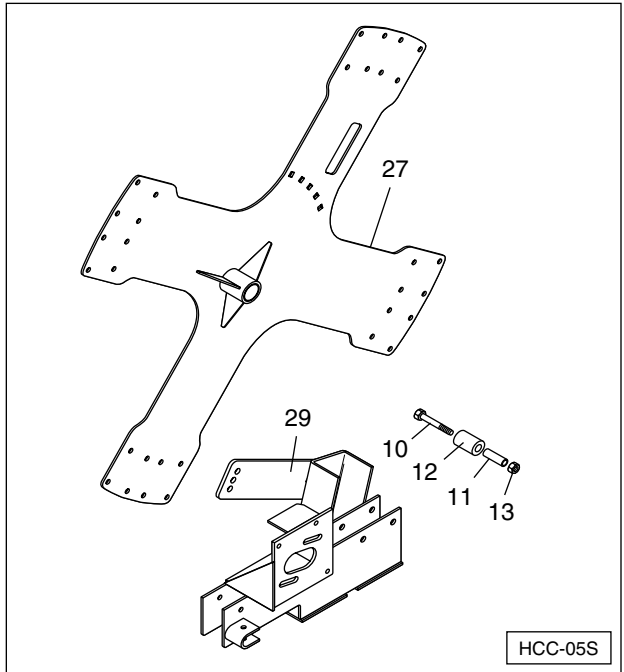
Kit contains parts 1 through 25, in addition to parts listed in this chart.

27	783984	LH Orbit (Track) Support Assy	1
29	783990	LH End Bracket	1

14	783992	Reel Assembly Parts Bag	1
----	--------	-------------------------	---

Roller Mounting Hardware

10	202826	Hex Head Bolt (M12 X 1.75 X 80)	2
11	481497	Tubing Spacer (.75" X 2.06")	2
12	243686	Reel Support Roller	2
13	212413	Prevailing Torque Hex Flange Lock Nut (M12 X 1.75)	2



**031297 Kit—Double Orbit Reel Package
(Case 2010/2020 and New Holland 72C and 74C)**

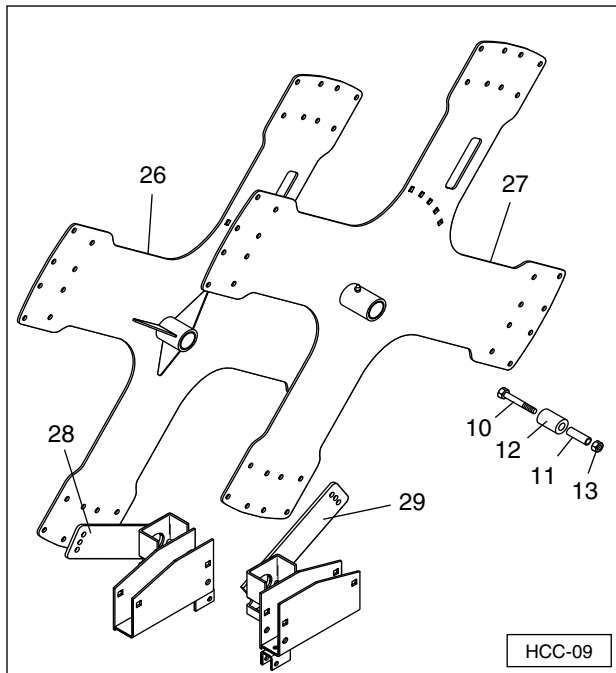
Kit contains parts 1 through 25, in addition to parts listed in this chart.

26	783983	RH Orbit (Track) Support Assy	1
27	784020	LH Orbit (Track) Support Assy	1
28	784023	RH End Bracket	1
29	784022	LH End Bracket	1

14	783982	Reel Assembly Parts Bag	1
----	--------	-------------------------	---

Roller Mounting Hardware

10	202826	Hex Head Bolt (M12 X 1.75 X 80)	4
11	481497	Tubing Spacer (.75" X 2.06")	4
12	243686	Reel Support Roller	4
13	212413	Prevailing Torque Hex Flange Lock Nut (M12 X 1.75)	4



**031298 Kit—Single Orbit Reel Package
(Case 2010/2020 and New Holland 72C and 74C)**

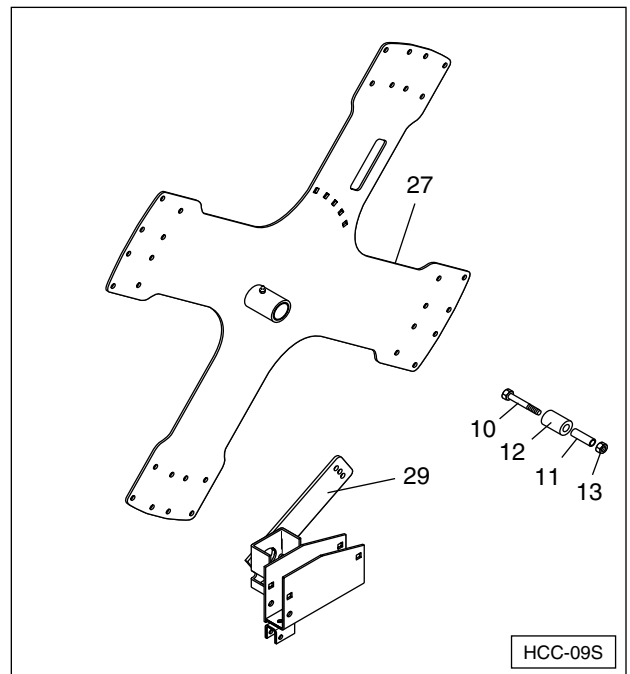
Kit contains parts 1 through 25, in addition to parts listed in this chart.

27	784020	LH Orbit (Track) Support Assy	1
29	784022	LH End Bracket	1

14	783992	Reel Assembly Parts Bag	1
----	--------	-------------------------	---

Roller Mounting Hardware

10	202826	Hex Head Bolt (M12 X 1.75 X 80)	2
11	481497	Tubing Spacer (.75" X 2.06")	2
12	243686	Reel Support Roller	2
13	212413	Prevailing Torque Hex Flange Lock Nut (M12 X 1.75)	2



**031299 Kit—Double Orbit Reel Package
(New Holland 971/973)**

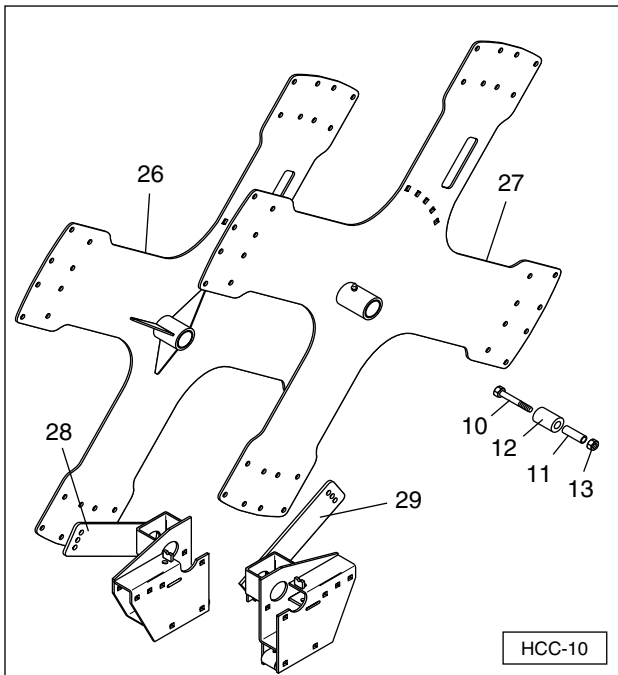
Kit contains parts 1 through 25, in addition to parts listed in this chart.

26	783983	RH Orbit (Track) Support Assy	1
27	783984	LH Orbit (Track) Support Assy	1
28	784018	RH End Bracket	1
29	784017	LH End Bracket	1

14	783982	Reel Assembly Parts Bag	1
----	--------	-------------------------	---

Roller Mounting Hardware

10	202826	Hex Head Bolt (M12 X 1.75 X 80)	4
11	481497	Tubing Spacer (.75" X 2.06")	4
12	243686	Reel Support Roller	4
13	212413	Prevailing Torque Hex Flange Lock Nut (M12 X 1.75)	4



**031300 Kit—Single Orbit Reel Package
(New Holland 971/973)**

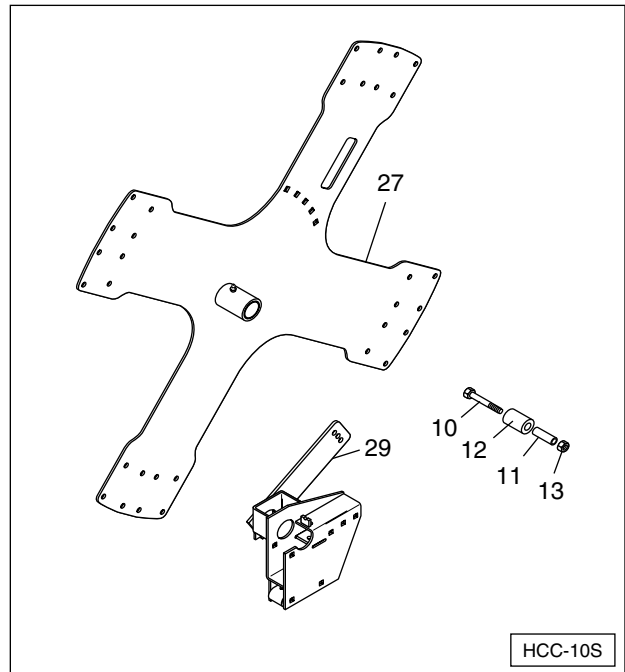
Kit contains parts 1 through 25, in addition to parts listed in this chart.

27	783984	LH Orbit (Track) Support Assy	1
29	784017	LH End Bracket	1

14	783992	Reel Assembly Parts Bag	1
----	--------	-------------------------	---

Roller Mounting Hardware

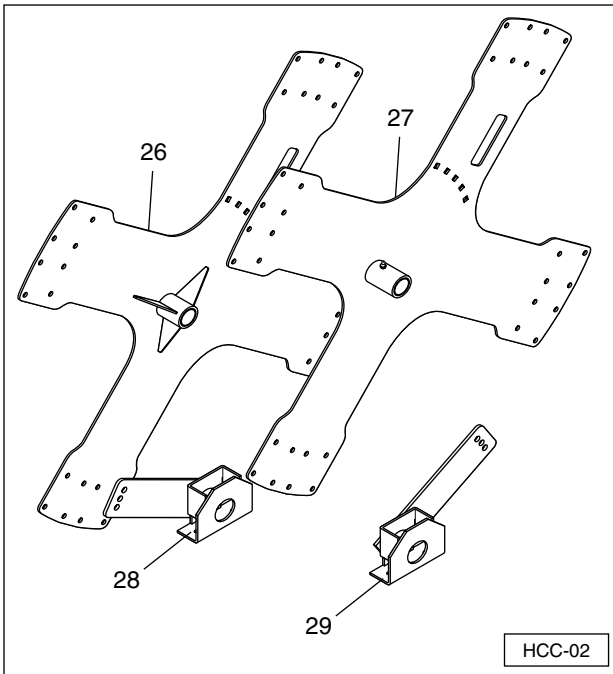
10	202826	Hex Head Bolt (M12 X 1.75 X 80)	2
11	481497	Tubing Spacer (.75" X 2.06")	2
12	243686	Reel Support Roller	2
13	212413	Prevailing Torque Hex Flange Lock Nut (M12 X 1.75)	2



**031311 Kit—Double Orbit Reel Package
(Honey Bee)**

Kit contains parts 1 through 25, in addition to parts listed in this chart.

26	783983	RH Orbit (Track) Support Assy	1
27	783984	LH Orbit (Track) Support Assy	1
28	784029	RH End Bracket	1
29	784028	LH End Bracket	1
14	783982	Reel Assembly Parts Bag	1



**031291 Kit—Double Orbit Reel Package
(AGCO)**

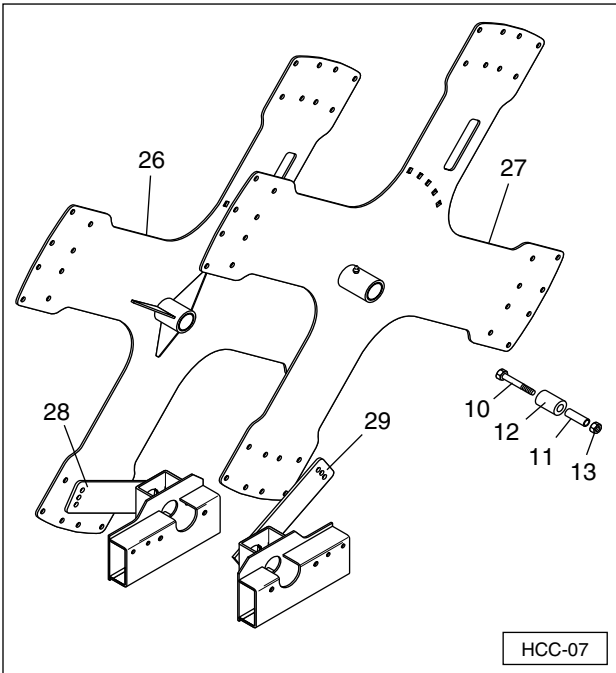
Kit contains parts 1 through 25, in addition to parts listed in this chart.

26	783983	RH Orbit (Track) Support Assy	1
27	783984	LH Orbit (Track) Support Assy	1
28	783995	RH End Bracket	1
29	783994	LH End Bracket	1

14	783982	Reel Assembly Parts Bag	1
----	--------	-------------------------	---

Roller Mounting Hardware

10	202826	Hex Head Bolt (M12 X 1.75 X 80)	4
11	481497	Tubing Spacer (.75" X 2.06")	4
12	243686	Reel Support Roller	4
13	212413	Prevailing Torque Hex Flange Lock Nut (M12 X 1.75)	4



**031292 Kit—Single Orbit Reel Package
(AGCO)**

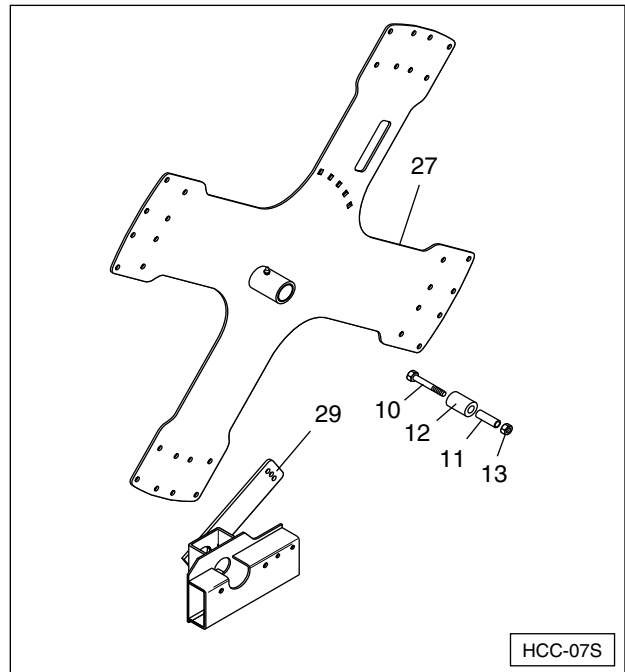
Kit contains parts 1 through 25, in addition to parts listed in this chart.

27	783984	LH Orbit (Track) Support Assy	1
29	783994	LH End Bracket	1

14	783992	Reel Assembly Parts Bag	1
----	--------	-------------------------	---

Roller Mounting Hardware

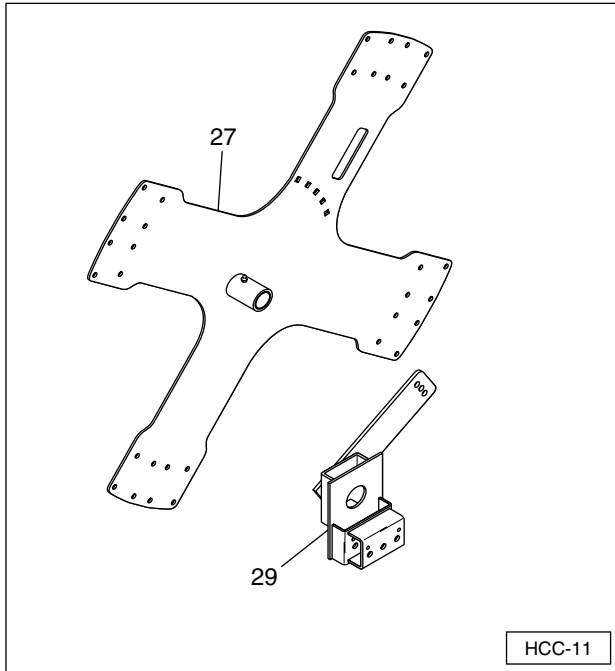
10	202826	Hex Head Bolt (M12 X 1.75 X 80)	2
11	481497	Tubing Spacer (.75" X 2.06")	2
12	243686	Reel Support Roller	2
13	212413	Prevailing Torque Hex Flange Lock Nut (M12 X 1.75)	2



**031310 Kit—Single Orbit Reel Package
(MF 1859)**

Kit contains parts 1 through 25, in addition to parts listed in this chart.

27	783984	LH Orbit (Track) Support Assy	1
29	784027	LH End Bracket	1
14	783992	Reel Assembly Parts Bag	1



Notes

Notes

HCC, Inc.
1501 1st Avenue
Mendota, IL 61342
815-539-9371
www.hccincorporated.com

C-1096
September 2005